

A Rewarding Career for You. A Better Life for Others.



A STUDENT GUIDE TO CAREERS IN:



Audiology



Speech-Language
Pathology



Speech, Language,
& Hearing Science



Picture Yourself Making a Difference Every Day

How would it feel to get a thank you from someone who couldn't say "thank you" before – or a laugh from someone who hears a songbird for the first time?

Audiologists, speech-language pathologists, and scientists who study speech, language and hearing are respected professionals devoted to human communication and to improving the lives of others every day.

Whether it's helping someone with a stutter, conducting an environmental noise survey or leading groundbreaking research, if you see yourself making a great living and making a difference in the world, read on to learn more. We can help you take the first step.

Few Other Careers Have So Much to Offer



Earn a good living with excellent benefits and job security



Be respected and feel good about what you do every day



Job availability is excellent, especially for specialists who are multilingual or who are from under-represented populations



Audiology and speech-language pathology are ranked highly among best jobs by *U.S. News & World Report*



Many geographic areas have positions that offer the flexibility to work with people of any age and in various settings, from universities to research labs to corporations in rural and urban settings



Work with clients or students; work with technology; conduct research or do all three



Find more resources at
hearingandspeechcareers.org

Hearing Loss

48 MILLION

people in America suffer from some degree of hearing loss.*



1 IN 5 TEENS

experience some degree of hearing loss.*

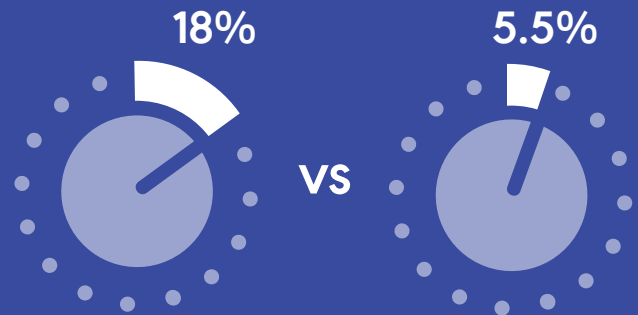


2.7 MILLION VETERANS

have **service-connected hearing disabilities** or are in treatment for hearing-related issues.*



Hearing loss is the **third most common** physical condition after arthritis and heart disease.*



ABOUT 18% of adults who report ≥ 5 years of exposure to **very loud noise at work** have speech-frequency hearing loss in both ears.

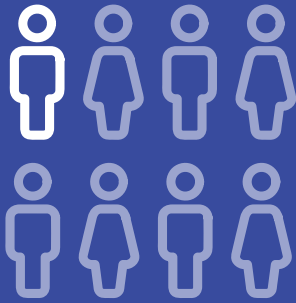
Compared to:

5.5% of adults with speech-frequency hearing loss in both ears who report **no occupational noise exposure**.⁺

(Adults aged 20-69)

28.8 MILLION

U.S. adults could benefit from using hearing aids.*



1 IN 8 PEOPLE

in the United States (13 percent, or 30 million) aged 12 years or older has **hearing loss in both ears**, based on standard hearing examinations.⁺

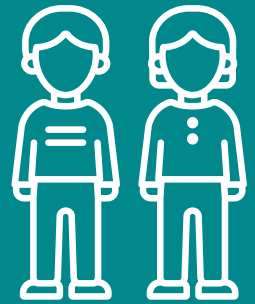


APPROXIMATELY 15% of American adults (37.5 million) aged 18 and over **report some trouble hearing.**⁺

Speech

NEARLY 1 IN 12 CHILDREN

ages 3-17 has a disorder related to voice, speech, language, or swallowing.⁺



BOYS AGES 3-17

are more likely than girls to have a voice, speech, language, or swallowing disorder (9.6% compared to 5.7% of girls).⁺

Voice

APPROXIMATELY 17.9 MILLION

adults in the United States have trouble using their voices.⁺



What You'll Do, What You'll Earn, And Where You Might Work

CAREERS IN AUDIOLOGY

As an audiologist, you are an expert in the nonmedical management of hearing and balance. You'll help identify and assess hearing loss, balance disorders, and tinnitus—and will counsel patients in managing those conditions. You'll also help people prevent hearing loss and falls.

Audiologists have a lot of options. You may work in collaboration with medical specialists, speech-language pathologists, educators, engineers or scientists. And you might choose to work:

- At a clinic or private practice
- As a college professor
- As a researcher in normal hearing and the evaluation and treatment of hearing disorders
- Educating other audiologists on newly designed instruments and testing equipment
- As an industrial audiologist who develops programs to protect people's hearing in the workplace

WHAT DO I NEED TO BE AN ASHA-CERTIFIED AUDIOLOGIST?



An AuD degree from
a CAA-accredited
program



Pass a
national exam

What led you to choose the career path of audiology?

"When I was in high school, I immersed myself in my local Deaf community after learning American Sign Language (ASL). Some of the adults and children I met had hearing aids and cochlear implants and I became fascinated by the idea that a small device can help someone with hearing loss hear again! After researching the devices, I stumbled across audiology and immediately knew it was the career for me!"

MELISSA SCHENLEY
Audiology Student



COMPENSATION: AUDIOLOGY

The salaries of audiologists vary depending on education, experience, work setting, and geographic location.

In 2023, the median salary for ASHA-certified audiologists was:

- **\$75,500** with 1 to 3 years of experience
- **\$91,113** with an AuD
- **\$122,400** with a PhD
- **\$120,000** for administrative or supervisory positions

In addition to salary, other employee benefits are usually very competitive.*

*According to a 2023 survey



CAREERS IN SPEECH-LANGUAGE PATHOLOGY

As a speech-language pathologist, you are an expert in the full range of human communication and its disorders, including identifying and assessing speech and language problems, swallowing disorders, as well as preventing and treating communication disorders in people of all ages.

WHAT DO I NEED TO BE ASHA-CERTIFIED SPEECH-LANGUAGE PATHOLOGIST?



A master's degree from a CAA-accredited program



Complete a Clinical Fellowship



Pass a national exam

Speech-language pathologists have a lot of options. You may work in collaboration with teachers, physicians, audiologists, psychologists, social workers, and rehabilitation counselors. And you might choose to work:



As a researcher who seeks answers to important questions that can change people's lives



As an innovator who develops new methods and equipment to evaluate communication and related problems



As a manager of a clinic or private practice



In a corporate setting, helping employees improve communication with customers

COMPENSATION: SPEECH-LANGUAGE PATHOLOGY

The salaries of speech-language pathologists depend on educational background, experience, work setting, and geographical location.



In Health Care*

- Annual salaries in health care ranged from **\$82,000** to **\$113,000**
- Administrators may earn up to **\$113,000**
- Hourly workers paid between **\$45.00** to **\$70.00** per hour



In Schools**

- Salary for an academic year ranged from **\$57,000** to **\$110,000**
- The median hourly wage for contract employees was **\$52.00**
- Median academic-year salaries for clinical service providers ranged from **\$71,000** in a combination of settings to **\$83,000** in secondary schools.

In addition to salary, other employee benefits are usually very competitive.



*According to a 2023 survey ** According to a 2024 survey

CAREERS IN SPEECH, LANGUAGE, AND HEARING SCIENCE

As a speech, language, and hearing scientist, you will conduct the research clinicians use to guide their work. You might investigate the biological, physical, and physiological processes of communication. Or you might explore the impact of psychological, social, and other factors on communication disorders. Your work could lead to new methods for diagnosing and treating individuals with speech, language, and hearing problems.

Speech, language, and hearing scientists have a lot of options. You may collaborate with related professionals such as audiologists, speech-language pathologists, engineers, physicians, dentists, psychologists or educators. And you might choose to:



Work as a researcher

in communication processes, new treatments, or behavioral patterns associated with communication disorders



Work as a university professor

to teach and mentor students and faculty to become the next generation of clinicians and researchers



Provide consulting

to universities, hospitals, government health agencies, or industries

What do you look forward to after graduation as an audiologist?

“I look forward to serving my country and the African continent. Being an international student from Mauritius, where the audiology field is barely existent, I wish to be a pioneer for audiology there. I have a strong interest in newborn hearing screening and this practice is non-existent in 94% of countries as of today, this implying non-existent in Mauritius and Africa. My wish is to advocate for newborn hearing screenings in my country and make it a mandatory protocol which will help many children. This, in the future, will grant children a fundamental right – communication.”

PALLAVI S. SOBUN
Audiology Student



COMPENSATION: SPEECH, LANGUAGE, AND HEARING SCIENCE

The salaries of speech, language, and hearing scientists vary widely depending on experience, work setting, and geographic location. In addition to salary, other employee benefits are usually very competitive.

There is a great need for scientists and college professors – especially those with diverse ethnic and cultural backgrounds. Your career as a speech, language, and hearing scientist can be very rewarding.

Get Started Now

Pursuing a rewarding career requires some investment. You want the educational program of your choosing with all the financial aid you can get. That means taking action as soon as possible.

For a complete list of academic programs in communication sciences and disorders, visit www.asha.org/EdFind

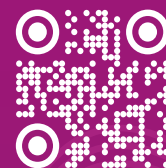
STEPS FOR HIGH SCHOOL STUDENTS

- 1 Maintain at least a B average to be considered for scholarships and to gain entry into the program of your choice. Don't wait until your junior year to buckle down!
- 2 Consider what motivates you. Having a sense of your goals can help you choose what to study and what degrees you'll need.
- 3 Learn about each program's faculty, curriculum, research interests and clinical education opportunities to help decide which one is best for you.
- 4 Select a program that allows for a broad education in arts and sciences with a strong foundation in oral and written communication skills. You will also want basic courses in the speech, language, and hearing sciences.

INTERESTED IN A MULTICULTURAL/ BILINGUAL EMPHASIS PROGRAM?

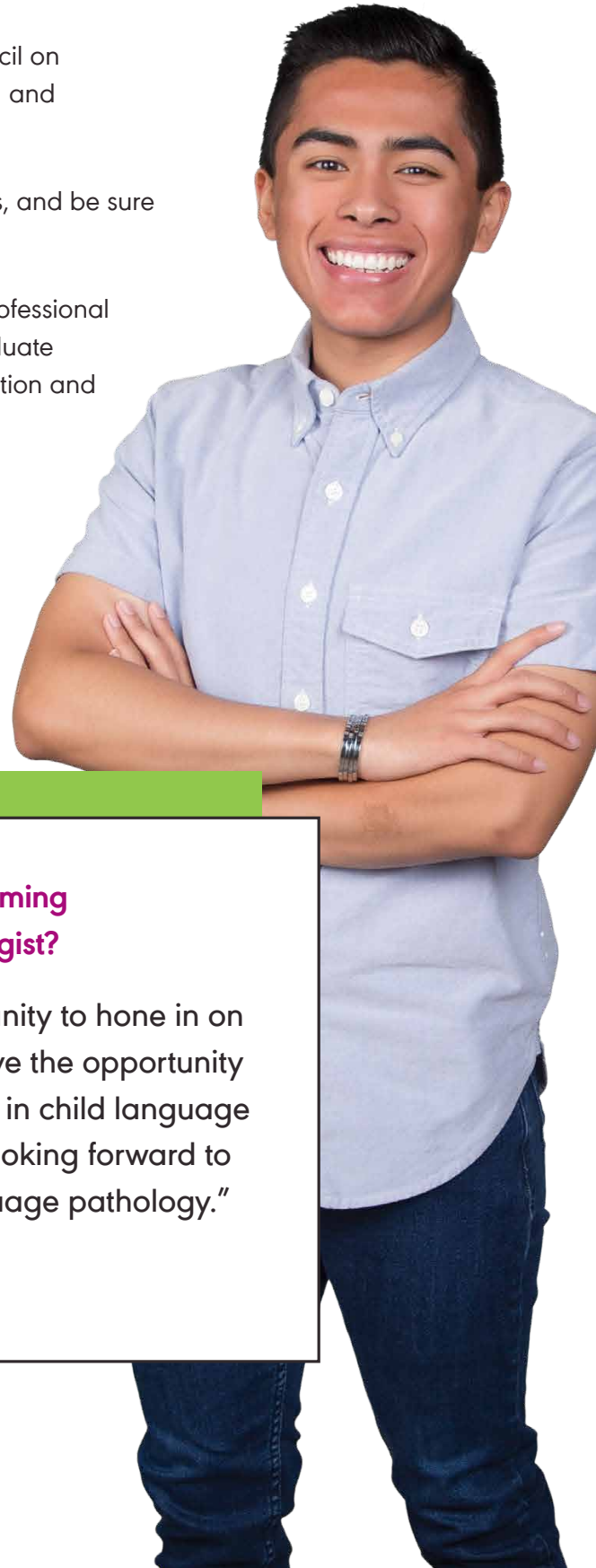
Explore communication sciences and disorders programs at Historically Black Colleges and Universities and programs with a multicultural/ bilingual emphasis at www.asha.org/EdFind

If you are part of a minority population visit hearingandspeechcareers.org to learn more about how your experiences can be a powerful asset in audiology and speech-language pathology careers.



STEPS FOR CURRENT UNDERGRADUATES

- 1 If you have an undergraduate degree in another discipline, you will need to complete relevant prerequisites before you enter a graduate program
- 2 Choose a graduate program accredited by the Council on Academic Accreditation (CAA) and review admission and program requirements at www.asha.org/EdFind
- 3 Visit CSD programs and talk with faculty and students, and be sure to visit clinics, classrooms, and research labs
- 4 Consider membership in NSSLHA, the national preprofessional membership association for graduate and undergraduate students interested in the study of human communication and related disorders. Visit nsslha.org



What excites you about becoming a speech-language pathologist?

"I'm really looking forward to the opportunity to hone in on my specialty. Our field is so broad. I'll have the opportunity to see whether I like working with children in child language or adults with traumatic brain injuries. Looking forward to kind of finding my place in speech-language pathology."

CHRISTOPHER QUINTANA
SLP Student



TIPS FOR GETTING FINANCIAL AID

- ✓ Consult with your high school guidance counselor, college career counselor or financial aid office
- ✓ Start early, and research all funding sources, such as:
 - Scholarships, grants, loans, and work-study programs
 - Aid from federal, state, and local governments; private agencies; foundations; and service organizations such as fraternities and sororities
 - Aid for individuals from specific racial or ethnic groups, those with disabilities
- ✓ Make a list of the requirements, applications, and deadlines from each source, and apply early!



Get more information at
www.asha.org/students/financial-aid

ASHA is Here for You Every Step of the Way

Reach out to ASHA for information and support:

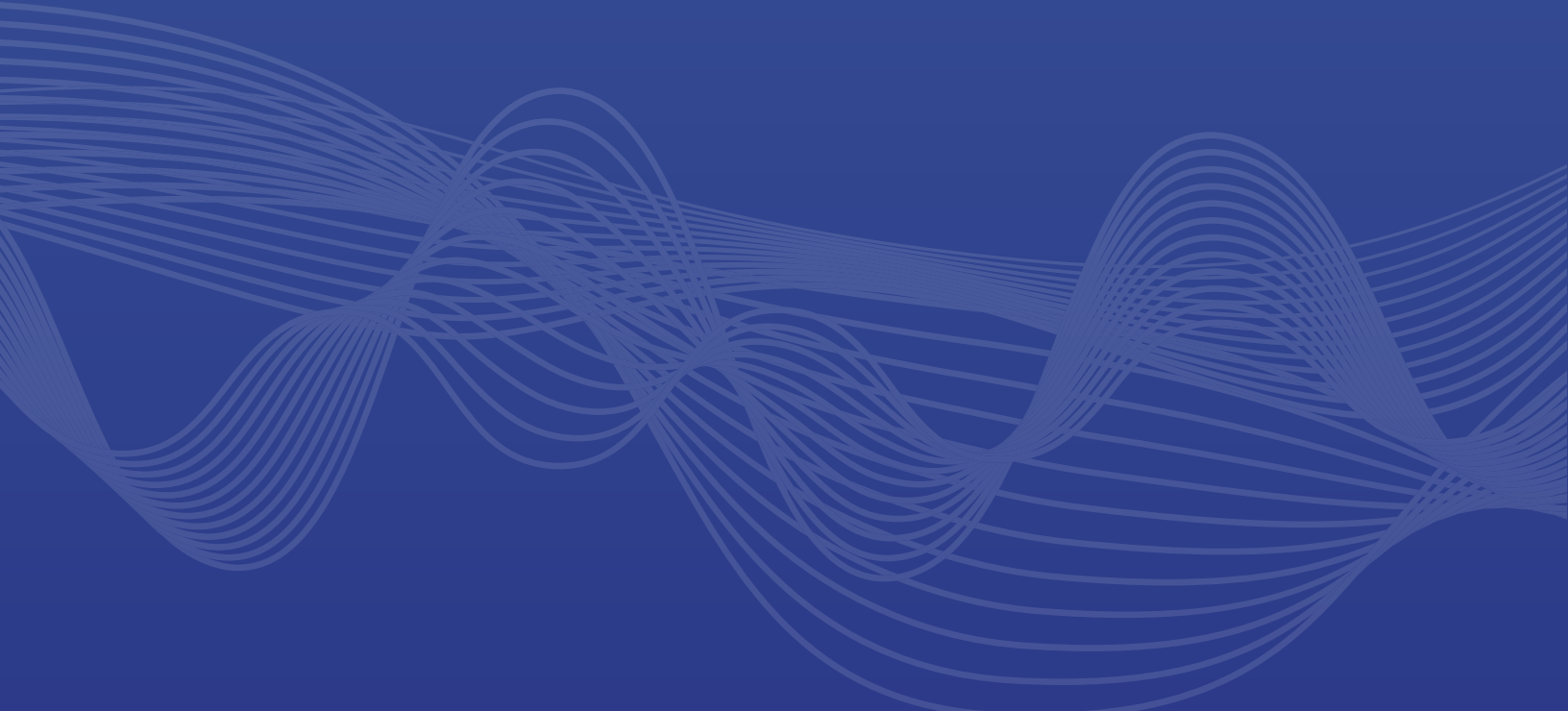
hearingandspeechcareers.org

careers@asha.org

(800) 638-8255

[@ashaweb](https://twitter.com/ashaweb)





ASHA
American
Speech-Language-Hearing
Association



The American Speech-Language-Hearing Association (ASHA) is the professional, scientific, and credentialing organization for audiologists and speech-language pathologists. The ASHA Certificate of Clinical Competence (CCC) is universally recognized by employers, third-party payers, consumers, and other professionals as symbols of quality for the professions of audiology and speech-language pathology