



CONFERENCE , PAID

# GET READY: HOW TO DIAGNOSE AND ASSESS DYSLEXIA

[View Course details](#) ▾

January 25, 2022

[Presenters](#)

[Learning Outcomes](#)

[Agenda](#)

[Disclosures](#)

[Requirements](#)

## LIVE EVENT

**COURSE NUMBER:** ABIO2210

**WHEN:** Available February 19, 2022 12:00-1:00 PM EDT

**WHERE:** Live session available on Zoom.

**DESCRIPTION:** In this session, we identified 3 signs of dyslexia and discussed an SLP's role in the diagnosing process. We looked at 3 areas to assess dyslexia and how to effectively identify which 2 assessments to consider for a dyslexia evaluation.



**ASHA CE**  
**APPROVED PROVIDER**

Sociability Books, LLC dba  
Tassel, LLC  
Introductory Level  
0.1 ASHA CEUs

## PLAYBACK RECORDING

**COURSE NUMBER:** ABIO2209

**WHEN:** Available February 21, 2022 – April 19, 2022

**WHERE:** Audio available once you register under “Course Content” at the bottom of this page.

**DESCRIPTION:** In this session, we identified 3 signs of dyslexia and discussed an SLPs role in the diagnosing process. We looked at 3 areas to assess dyslexia and how to effectively identify which 2 assessments to consider for a dyslexia evaluation.



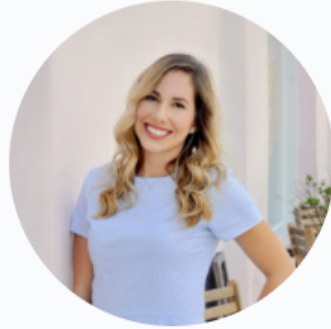
### WHO THIS COURSE IS GOOD FOR:

- Any ASHA member, CCC holder, or other professional that is licensed or credentialed to practice speech-language pathology (SLP) or audiology or preparing to earn ASHA CEUs.
- Any professional who works with pediatric clients.
- Any professional who is seeking to learn more about dyslexia and other learning disabilities.

### WHO THIS COURSE ISN'T GOOD FOR:

- Any professional who is not familiar with the terms dyslexia
- Any professional that does not currently work with any pediatric clients and does not plan to in the near future.

## PRESENTERS:



### **VENITA LITVACK, M.A, CCC-SLP**

Venita is an Assistive Technology (AT) Consultant in south Florida. She has a passion for using AAC, AT, and literacy to support individuals with complex communication needs, autism, and other disabilities. Venita has delivered poster presentations on several topics related to AAC at ASHA and co-presented several ASHA CEU accredited courses. Venita co-authored two articles published in ASHA Leader's online publication, as well as the Lou Knows What to Do book series published by Boys Town Press. Recently, Venita started utilizing the power of social media to empower and motivate educators across the country through the Speechie Side Up podcast, blog, Instagram account, and YouTube channel.



### **HEATHER CASKA, MS, CCC-SLP**

Heather Caska is an experienced speech-language pathologist in Arizona, who owns HBC Language and Literacy. Since 2014, she has dedicated countless hours to increase her knowledge and understanding of language-literacy disorders, specifically dyslexia. In 2015 she attended the Association level training through the Academy of Orton-Gillingham Practitioners and Educators (AOGPE). She has experience working with a variety of communication disorders; however, her true passion lies in working with children with dyslexia and their families and educating other SLPs on their role in early identification of dyslexia.

## DISCLOSURE STATEMENTS

**Venita Litvack** has the following relevant financial relationships to disclose: ownership interest in Speechie Side Up, LLC and Tassel Learning, LLC; royalties from the Lou Knows What to Do book series.

**Venita Litvack** has the following relevant nonfinancial relationships to disclose: member of the ASHA Special Interest Group 12.

**Heather Caska** has the following relevant financial relationships to disclose: Heather is the owner of HBC Language & Literacy and Co-Founder of Early Birds Learning Specialists. She is also being offered a stipend for this podcast.

**Heather Caska** has the following nonfinancial relationships to disclose: Heather is the past Chair of the Professional Development Committee for the Arizona Speech-Language-Hearing Association and is the current President of Arizona IDA. She also has family members affected by dyslexia.

**In-Kind Support was provided by** the following companies through product offerings, services, and/or discounts to giveaway to attendees at no charge: Vooks, The Speech Chick, The Digital SLP, Swivel Scheduler, Creative Speech Lab, What Should Danny Do?, SLP Now, Bridges, The Speech Tree Co, SLP Toolkit, Northern Speech Services, Speech Time Fun, Peachie Speechie, SLP Nerdcast, and Tassel Learning.

## LEARNING OUTCOMES

**As a result of this activity, participants will:**

- Identify 3 signs of dyslexia
- Describe 3 areas to assess for dyslexia
- Define SLPs role in diagnosing dyslexia
- Identify 2 assessments to consider for a dyslexia evaluation

# AGENDA

10 MIN	Introductions and Backgrounds
5 MIN	Definition of dyslexia
10 MIN	Discussion of signs of dyslexia
15 MIN	Description of an SLPs role in diagnosing dyslexia
15 MIN	Discussion of assessments to consider for a dyslexia evaluation
5 MIN	Closing, Discussion, and Questions

## COMPLAINT POLICY

To file a complaint or ask general questions about the complaint filing process, please contact our support team at [info@tasseltogether.com](mailto:info@tasseltogether.com)

## REFUND POLICY

Click [here](#) to read more about our refund policy.

- Challenges and requests its presenters, users and administration to promote a hospitable and equitable learning environment for all persons;
- Asserts that tolerance for diversity shall be the norm for behavior on the part of all who are present; and
- Discourages the use of derogatory or disparaging language and other forms of expression and, particularly, disapproves of those who insult persons on the basis of race, ethnicity, national origin, ancestry, citizenship, religion, creed, sex, sexual orientation, marital status, age, socioeconomic status, disability, or veteran status.

### Equal Opportunity

Tassel, LLC is committed to providing equal opportunities in accordance with all applicable laws. If you are in need of a disability-related accommodation, please contact [info@tasseltogether.com](mailto:info@tasseltogether.com). We will review your request and respond in a timely manner. Please note that we require a minimum of 2 weeks to provide a reasonable accommodation for your request.

### Payments & Taxes

[www.tasseltogether.com](http://www.tasseltogether.com) accepts these forms of payment: Visa, MasterCard, AMEX, JCB, Discover. Billing occurs at the time of or shortly after your transaction.

You agree that you will pay for all products and services you purchase through [www.tasseltogether.com](http://www.tasseltogether.com), and that [www.tasseltogether.com](http://www.tasseltogether.com) may charge your credit card for any products and services purchased through the Site and for any additional amounts (including any taxes and late fees, as applicable) that may be accrued by or in connection with your purchases.

Your total price will include the price of the products and services purchased plus any applicable sales tax; such sales tax is based on the bill-to address and the sales tax rate in effect at the time you download the products and services. We will charge tax only in states where digital goods are taxable. All currencies denoted are in USD.

### Third Party Terms & Conditions

*Certain courses available on Tassel are created in conjunction with third parties under Joint Venture Agreements. In some instances registering for these courses grants you access to Joint Partner software, products, and services. By registering for courses created with a third party with whom Tassel has a contractual relationship you acknowledge and consent to the third party terms of service.*

# TERMS OF SERVICE

## REFUNDS

We want you to be satisfied with your purchase, and we also want you to give your best effort to apply all of the strategies in the course. We offer a 30-day refund period following the course start date. In order to qualify for a refund you must submit proof that you attended the course and it did not work for you.

In the event that you decide your purchase was not as expected, within 30 days of enrollment, contact our support team at [info@tasseltogether.com](mailto:info@tasseltogether.com) and let us know you'd like a refund by the 30th day at 11:59 CST. You must include your course evaluation results with your request for a refund. If you request a refund and do not include your course evaluation results by the 30th day, you will not be granted a refund. All refunds are discretionary as determined by Tassel, LLC.

### Cancelling Registration for an Upcoming Tassel Course or Conference

If a course or conference is canceled by [www.tasseltogether.com](http://www.tasseltogether.com), a full refund or credit toward another course/conference will be issued. If a course/conference is rescheduled, participants will have 48 hours from notification to request a refund/credit. After 48 hours, the participant will automatically be enrolled in the rescheduled event.

To request a cancellation of a paid online course/conference, participants must provide written notice by email to [info@tasseltogether.com](mailto:info@tasseltogether.com) within 24 hours of placing their order, prior to the course start date, and the full course fee will be refunded. If notice is not given within 24 hours, a credit towards a future course of equal value will apply.

### Professional Conduct and Nondiscrimination Policy

It is the policy of Tassel, LLC to create and maintain a rich learning environment that values diversity, respects human dignity, is hospitable, equitable, and tolerant, and in which all persons are free from all forms of discrimination or discriminatory harassment.

In order to assure all users an appropriate learning environment, Tassel, LLC:

## COURSE CONTENT

^ Collapse All

### ABIO2209 & 2210: Materials & Requirements

2 Requirements

 Available on February 16, 2022 5:00 am



#### Lesson Content

 [ABIO2209 & 2210: Quiz](#)



 [ABIO2209 & 2210: Program Evaluation](#)



# REQUIREMENTS



## How to Earn ASHA CEUs:



### *Program Evaluation*



COMPLETE A BRIEF PROGRAM EVALUATION SURVEY.



### *Quiz*



PASS A BRIEF QUIZ AND ACHIEVE A SCORE OF 80% OR HIGHER.



### *Due Date*



FINISH THE PROGRAM EVALUATION AND PASS THE QUIZ BY THE END DATE INDICATED ON THE COURSE DETAILS PAGE.



### *Tassel Account*



YOU MUST HAVE A FREE TASSEL ACCOUNT WITH UPDATED ASHA INFORMATION IN YOUR PROFILE.



### *We Will Submit*



TASSEL WILL AUTOMATICALLY REPORT YOUR COURSE PARTICIPATION TO ASHA.

Note: ASHA CEUs are awarded by the ASHA Continuing Education Board once eligibility requirements are met.