



## Launch party countdown!

**00 : 00 : 00 : 00**  
DAYS    HOURS    MIN    SEC

# The launch party you don't want to miss!

Join us for CEUs\*, giveaways, games, prizes, discounts, networking, connection, and lots of FUN!

Registration is free.

## Saturday, January 8, 2022 via Zoom

12 pm pacific | 1 pm mountain

2 pm central | 3 pm eastern

See what time this is in your part of the world.

Agenda: 1st hour = Free course. 2nd hour = App tour, Q/A, games, giveaways, and prizes!

\*ASHA CEUs, AOTA CEUs, and CEUs approved by the PT Board of CA.

## Agenda

Saturday, January 8, 2022 via Zoom

### First hour:

12 pm pacific | 1 pm mountain | 2 pm central | 3 pm eastern

**Course:** Building Connections to Reduce Isolation and Improve Therapy Outcomes

ASHA CEUs, PD approved by AOTA, and CEUs approved by the CA Board of PT. There is no fee for these CEUs.

### Second hour:

1 pm pacific | 2 pm mountain | 3 pm central | 4 pm eastern

App tour, games, prizes, and giveaways!

**We can't wait to see you at the launch party!**  
**Earn CEUs, meet other therapists, and have FUN with us!**

Let's get you registered!

🕒 Takes 1 min

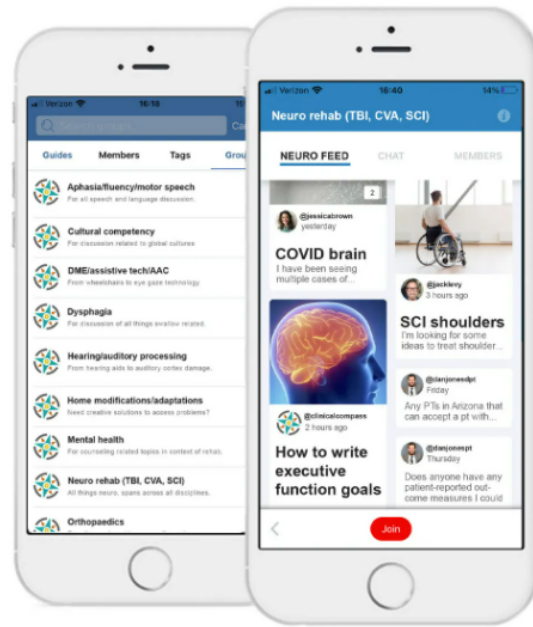
**Start**

# Details

## First hour: Course: *Building Connections to Reduce Isolation and Improve Therapy Outcomes*

This first hour is available as continuing education, including ASHA CEUs, PD approved by AOTA, and CEUs approved by the CA Board of PT. There is no fee for this course. In order to receive a certificate of completion, you'll need to fill out a form at the end of the course before the end of the live event (this gives you one hour to complete the form). If you need accommodations for this course, please contact us at [support@therapyinsights.com](mailto:support@therapyinsights.com).

This course is a very unique opportunity to see first-hand how communities are creating interdisciplinary networks to better integrate services and improve outcomes. This course will present, in real-time, a mock meeting of a Hub based on two case studies. Panelists include a broad range of disciplines, including social services, rehabilitation therapy, housing, law enforcement, and more. You are invited to sit back, watch the interaction, ask questions, and be inspired! Note that Therapy Insights is not affiliated with the Hub model (please see full course disclosures for details.)



**Course description:** Rehabilitation therapists are often working in isolation, leading to lack of resources and burnout. This course will demonstrate how therapists can engage with the Hub model, a framework designed to improve interdisciplinary collaboration and improve patient outcomes. Participants will watch a live dramatization of a Hub meeting and learn how they can set up a Hub in their community.

**Content disclosure:** This presentation will focus exclusively on The Hub Model and will not include information about other similar or related models. The Hub Model (non-profit model for integrated services) originally began in Canada in an effort to improve focus on immediate mitigation of risks that lead to harm, thereby improving community safety and well-being (McFee & Taylor, 2014).

### Time-ordered agenda:

0:00 - 0:05 — Welcome + introductions.  
0:05 - 0:10 — An overview of the Hub Model. Introduction of panelists. Description of case studies.  
0:10 - 0:50 — Panelists engage in role-playing drama around 2 case studies.  
0:50 - 1:00 - Q/A session with panelists. Your chance to ask them anything!  
1:00 — Course ends. If you want to earn ASHA CEUs, AOTA credit, or certificate of completion approved by the PT Board of CA, follow the link in the chat box to complete our required form.

## Second hour: App tour, meet the Clinical Guides, Q/A, and games, prizes, and giveaways!

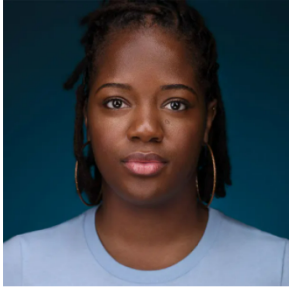
To participate in these games, be sure download the app from the App Store or Google Play store. No purchase is necessary to download the app or participate in these games or prizes.

Everyone who downloads the app and participates in the games will have a chance to win a lifetime membership!

Enjoy an exclusive discount of 50% off your first month during the launch party! That's only \$5 for your first month of Clinical Compass! Use code LAUNCHPARTY.

- Game #1: Meet Your Clinical Guides!  
Two truths and a lie! Each participant wins a prize!
- Game #2: Interdisciplinary Jeopardy!  
Test your knowledge of interdisciplinary expertise! Each participant wins a prize!
- Game #3: Lightning Trivia!  
We will ask a series of 20 trivia questions. Respond in the app! Include your discipline (OT/PT/SLP) in your response. The first one to answer correctly wins a point for their discipline. Whichever discipline gets the most correct answers wins!

## Course Panelists



### Frances Mathieu, LICSW

Frances Mathieu is a Doctoral Leadership Psychology student at William James College. She earned her Master of Social Work degree from Clark Atlanta University where she graduated with honors. Frances's undergraduate degree is from St. John's University, where she obtained her Bachelor of Arts degree in Psychology and minored in Sociology and International Studies. Ms. Mathieu currently serves as the Clinical Manager of Workforce Development at North Suffolk Mental Health Association. Ms. Mathieu recently published "The Correlation Between Depression and Acculturation, Amongst Haitian Americans Immigrants" which can be found on Amazon. During her doctoral studies at William James College, Frances plans to focus primarily on professional development and growth within the healthcare setting. Ms. Mathieu's mission is to help agencies create an environment that promotes psychological safety amongst employees all while providing the best trauma-informed care to patients.



### Marzieh Bonakdarhashemi, LMHC

Marzieh is a Licensed Mental Health Counselor in Massachusetts. She is the Clinical Manager at NSMHA's Freedom Trail Clinic location and an outpatient mental health clinician. She currently works primarily with individuals with serious mental illness. Previously, she worked in a hospital setting with individuals who have experienced community violence. She also has post-Bachelor's experience working with children and young adults with developmental differences including autism, ADHD, etc. A few key factors to her approach in working with others include empathy, unconditional positive regard and a trauma-informed and culturally-responsive lens.



### Arianna LaCroix, PhD CCC-SLP

Arianna LaCroix, Ph.D. CCC-SLP is an Assistant Professor in the Speech-Language Pathology Program at Midwestern University in Glendale, Arizona. Her research focuses on understanding the relationship between language and cognition, with a particular focus on how to improve the treatment of sentence comprehension deficits in persons with aphasia. Dr. LaCroix has clinical expertise as a speech-language pathologist working with individuals with communication disorders stemming from stroke, traumatic brain injury, and neurodegenerative diseases.



### James Boyle, MSW

James graduated in May 2021 from the Boston University School of Social Work where he received his MSW with a concentration in Behavioral Health. James currently wears many hats as an outpatient individual therapist, a Clinician within an intensive outpatient program for SUD treatment, and as the grant manager for embedded substance use treatment in a Boston-area high school!



### Nicole Palermo, MEd

Nicole Palermo is the social worker/mental health counselor for the city of Revere. Nicole graduated in 2020 from Cambridge College with a Masters degree in Mental Health Counseling and School Adjustment Counseling. She is on track to receiving her LMHC within the next year.



### Joanna Cataldo

Joanna Cataldo has worked in the human services field for over 30 years. A native of East Boston, MA, Joanna attended Boston Public Schools. She received a BA from Harvard College, and an MBA from Brandeis University. She recently completed an MSW degree at Boston University. For the past seven years she has been the coordinator of a community coalition in East Boston that focuses on substance use and misuse prevention in youth, and access to treatment for adults. She is the co-chair and one of the founding members of the East Boston Hub, a collaboration with the Boston Police, the goal of which is to bring resources to individuals or families at an elevated level of risk, before harm to self or others.



### Dan Cortez

Dan is a Community Engagement Specialist with the police department. He strives to support those in need and those that are capable of assisting others. He thinks differently and pushes others to do so.

**Duration:** 1 hour.

**Target audience:** Speech, occupational, and physical therapists.

**Instructional level:** Introductory (Information is geared to practitioners with little or no knowledge of the subject matter. Focus is on providing general introductory information.)

**Key learning outcomes:**

As a result of this activity, the participant will be able to...

1. Define the Hub model.
2. List at least 5 kinds of disciplines involved in a Hub model.
3. Describe how a therapist can start a Hub model.
4. Demonstrate how a therapist can participate in a Hub model.
5. Explain how Hub models improve patient outcomes.

**Webinar information:**

- This course will be presented on the Zoom platform.
- High-speed internet connection is required.

**Recorded course information:**

- A recorded version will not be made available.

**Instructor disclosures:**

- **Financial**
  - Panelists are being paid by Therapy Insights to participate in this course presentation.
  - Panelists receive salaries from institutions that support the Chelsea Hub.
- **Non-financial:**
  - Panelists are professionally linked to the Chelsea Hub in the larger Boston community.
  - Therapy Insights is not affiliated or associated with the Hub model. Therapy Insights does not claim to act as an advisory regarding the Hub model.
  - The course presented in this hour is unrelated to the Clinical Compass app product.

**Instructional methodology:** Case studies

**Course completion requirements:**

- Full attendance during webinar, as tracked by on-time login and online presence for the duration of the course.
- Completion of form after the course.
- Form needs to be completed within 1 hour of end of course.
- Completion of program evaluation form required.

**Cancellation and refund policy:**

In the rare case where this event is canceled, it will be rescheduled. Participants will be notified by email. As this course is no-cost for all participants, refunds will not be offered in the event of cancellation.



**ASHA CE**  
**APPROVED PROVIDER**

**Therapy Insights**

Introductory level  
.1 ASHA CEUs