



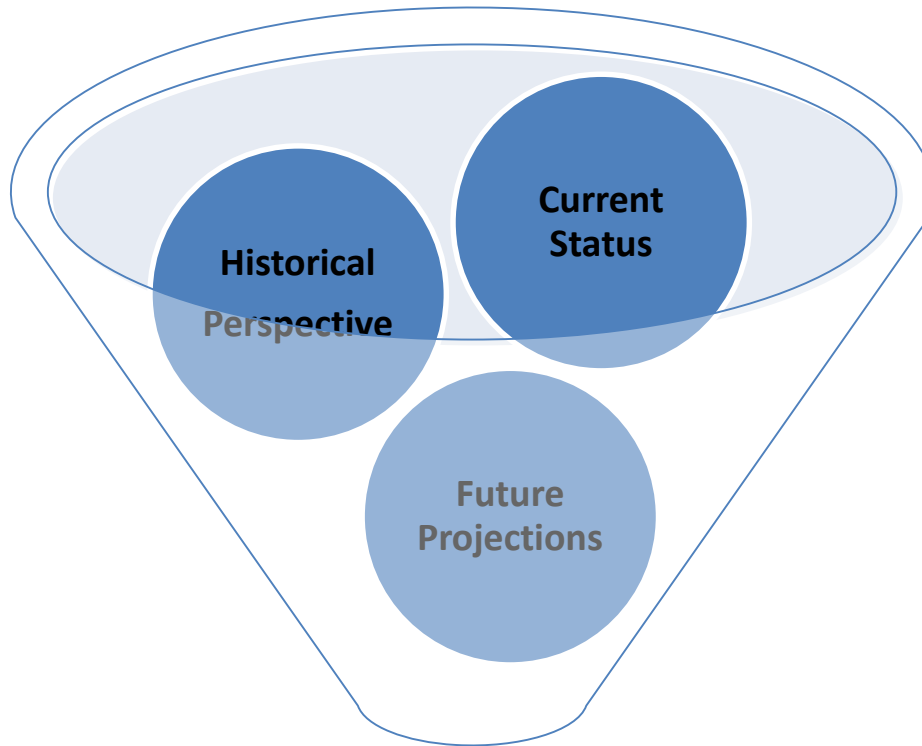
APTA

American Physical Therapy Association<sup>SM</sup>

William Boissonnault, PT, DHSc, FAPTA

# Residency Education

## Physical Therapy Profession's Current Model



**Lessons Learned**

# Professional Education

- **Doctor of Physical Therapy (DPT)**
  - 233 accredited programs
  - 4yrs + 3yrs model
  - Clinical Education
    - Mean = 36 full-time weeks

# Post-Professional Education

- Residency and Fellowship Training
  - Clinical Specialty certification
- Transitional DPT
- Advanced Academic Degrees
- Continuing Education

# Goal of Residency Education

- “Produce physical therapists who demonstrate superior post-professional skills and advanced knowledge in specified area of practice.”

# Post-Professional Education

- Residency Areas
  - Acute Care
  - Cardiovascular/Pulmonary
  - Clinical electrophysiology
  - Geriatrics
  - Neurology
  - Orthopaedics
  - Pediatrics
  - Sports
  - Womens Health
  - Wound Care

# Current Accredited Programs

- September, 2016:
  - 220 accredited residency programs
    - 73 housed within academic medical center
    - Average of 3 resident positions/program



# Areas of Study (# of Programs)

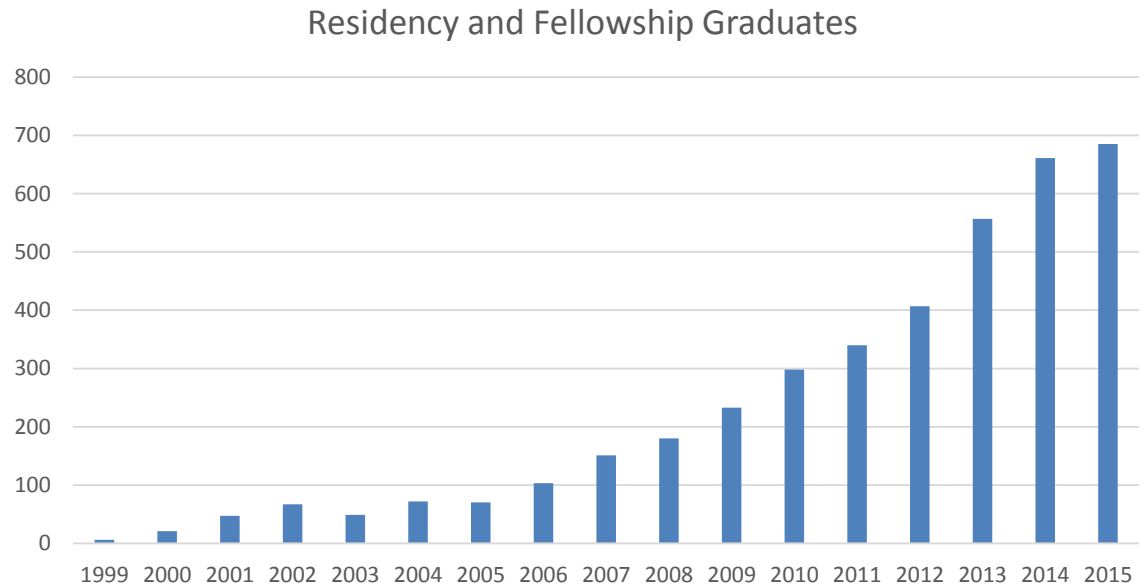
- **Residency (220 total programs)**
  - Acute Care (1)
  - Cardiovascular & Pulmonary (5)
  - Clinical Electrophysiology (1)
  - Faculty (1)
  - Geriatrics (14)
  - Neurologic (37)
  - Orthopaedics (96)
  - Pediatrics (21)
  - Sports (34)
  - Women's Health (9)
  - Wound Care Management (1)
- **Fellowship (42 total programs)**
  - Critical Care (3)
  - Hand Therapy (2)
  - Higher Educational Leadership (1)
  - Movement System (1)
  - Neonatology (2)
  - Orthopaedic Manual Physical Therapy (26)
  - Performing Arts (0)
  - Spine (2)
  - Sports Division 1 (2)
  - Upper Extremity Athlete (3)

# Historical Timeline

- **1996:**
  - APTA BOD implements voluntary credentialing process for residency programs
- **1997:**
  - APTA BOD establishes 5-member Credentialing Committee
- **2000:**
  - APTA BOD expands credentialing process to fellowship programs
- **2009:**
  - APTA BOD transitions the 5-member Credentialing Committee to a 7-member board (ABPTRFE), and establishes 2 supporting councils.
- **2013:**
  - APTA launches RF-PTCAS
- **2014:**
  - APTA BOD approves change of term credentialing to accreditation

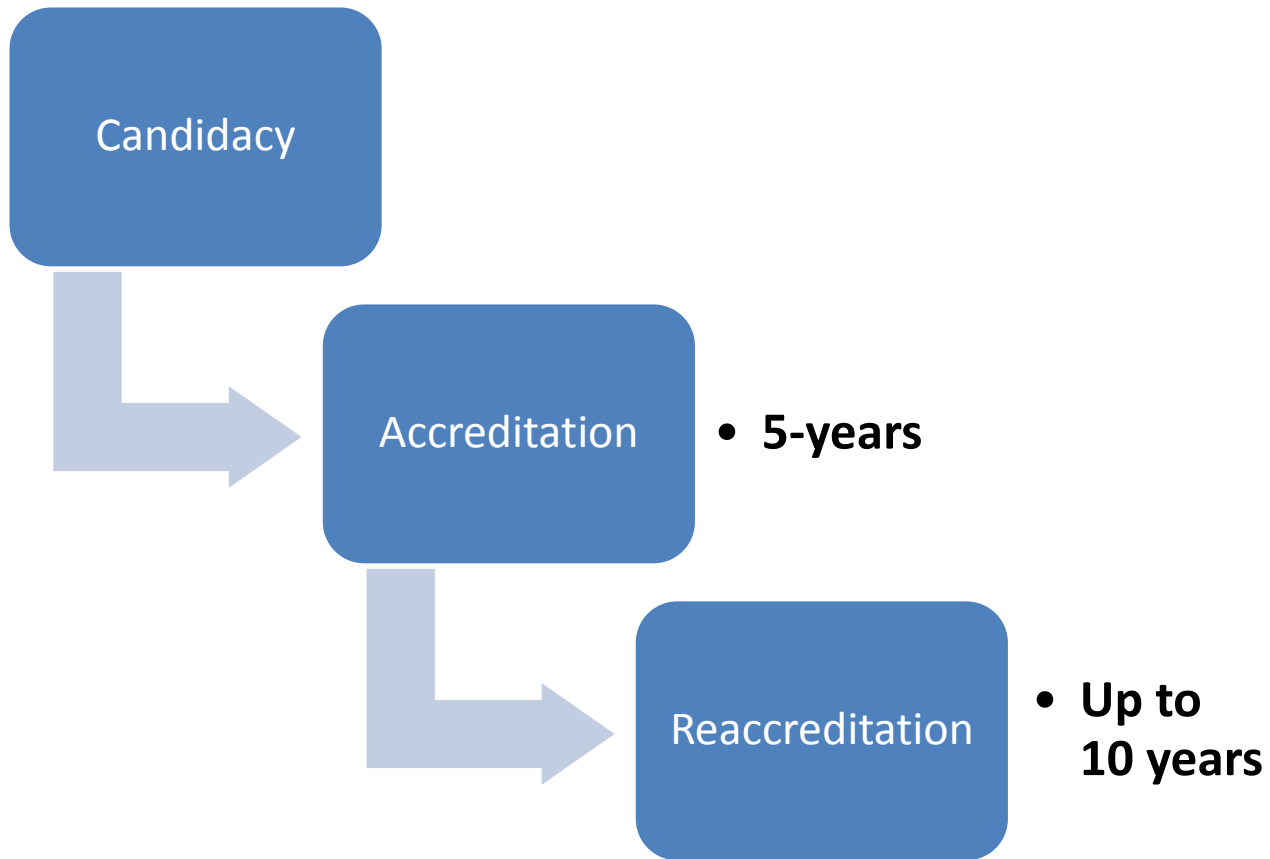
# Number of Graduates

Year	Both	Residency	Fellowship
1999	6	6	0
2000	21	11	10
2001	47	20	27
2002	67	20	47
2003	49	22	27
2004	72	23	49
2005	70	29	41
2006	103	44	59
2007	151	77	74
2008	180	91	89
2009	233	136	97
2010	298	204	94
2011	340	250	90
2012	407	295	112
2013	557	412	145
2014	661	506	155
2015	685	497	188
<b>Total</b>	<b>3947</b>	<b>2643</b>	<b>1304</b>



# Current Applications: Programs

- September, 2016:
  - 55 Initial accreditation applications
  - 19 Reaccreditation applications



No of Residents/Fellows	*Recognition Fee	Candidacy Fee	Annual Fee	Reaccreditation Fee
Year	2015/2016	2016	2015/2016	2016
1-5 Residents/Fellows	\$500.00	\$3145.75	\$922.88	\$3645.75
6-10 Residents/Fellows	\$500.00	\$3761.00	\$1230.50	\$4261.00
11+ Residents/Fellows	\$500.00	\$4376.25	\$1538.13	\$4876.25

# Site Visit Fees

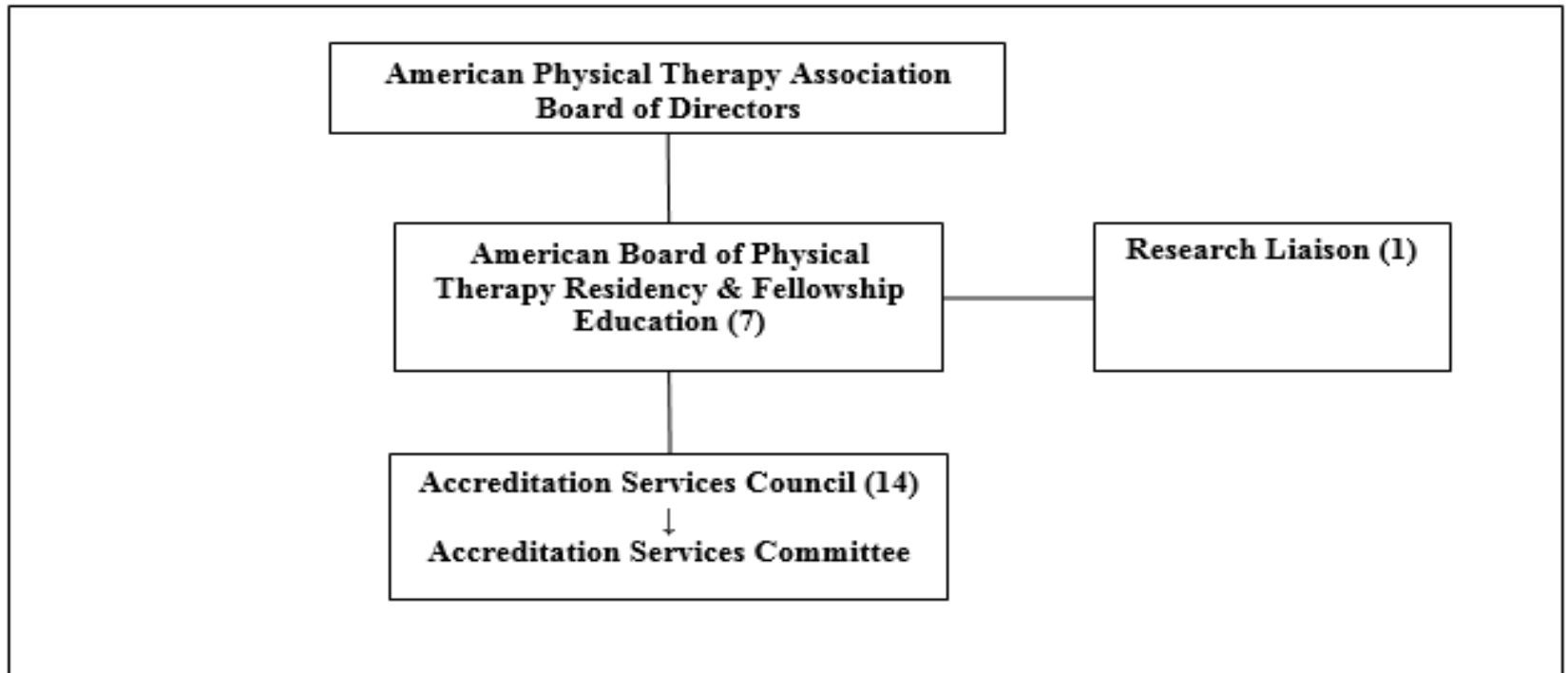
- Charged to programs
- Travel, Lodging, Food
- 2-visitor and 2-day visit

# RF-PTCAS

- Launched in 2013
- Liaison International
- Free of charge for programs
- Programs must participate
- Participant charge = \$135 first program and \$40/additional program



# Organization Chart



**Currently 83 members of the Accreditation Services Committee which brings total volunteers to 105**

# ISSUES

- Limited **value proposition** among employers
- Minimal emphasis on residency/fellowship program **benefits**
- Difficult **justifying** accreditation costs
- **Prescriptive** focus on procedural requirements
- Need to strengthen **outcomes** focus to better communicate value
- **Onerous** process (in moving from credentialing to accreditation)

# ISSUES

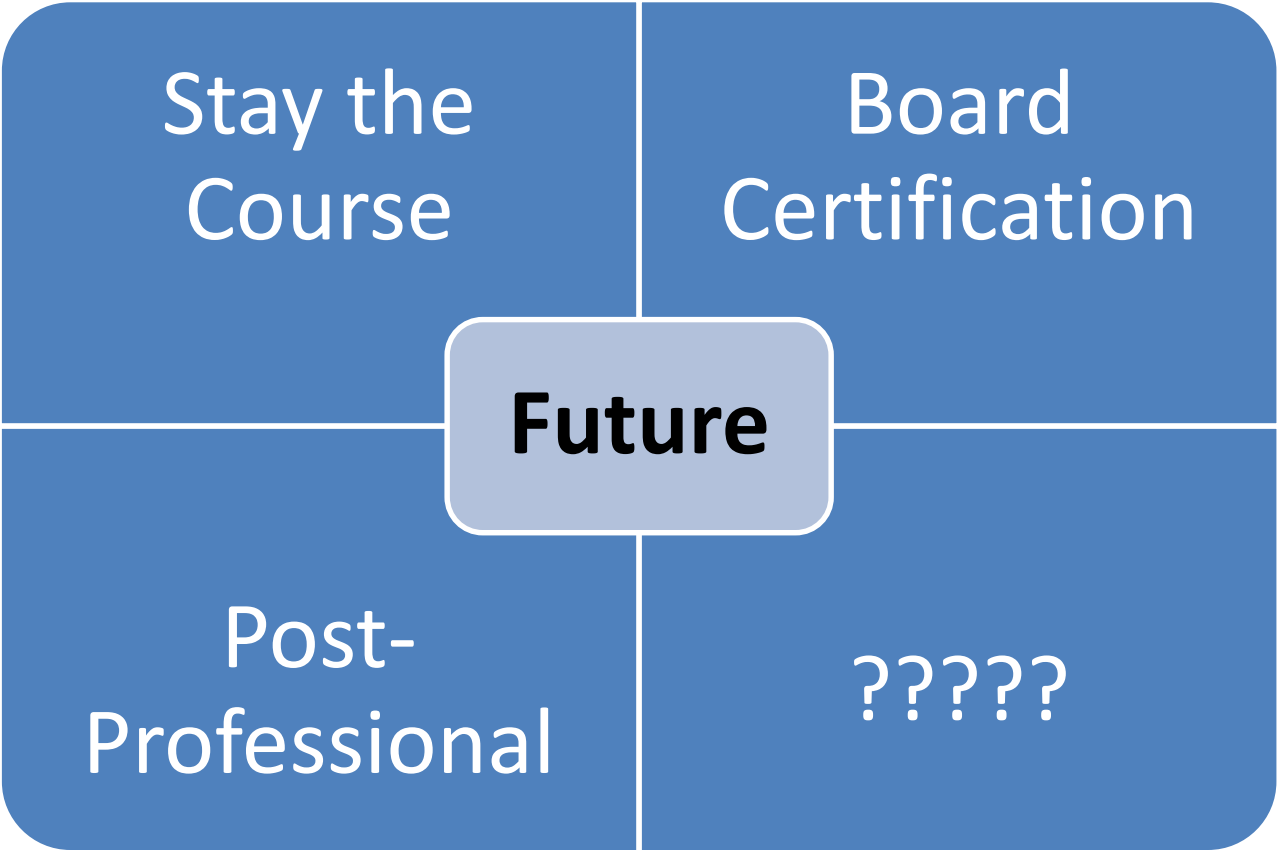
- **Inconsistency** among program reviews
- **Acceptance** of varying program models/approaches
- **Unclear** residency/fellowship program distinction
- Effective **integration** of technology in the accreditation process
- Current model not **scalable**
- Not required for **clinical specialization**

# ABPTS

- To sit for the board examination:
  - Evidence of minimum of 2000 clinical practice hours in specialty area, OR
  - Successful completion of accredited residency program

# ABPTS

- Governing body for board certification and recertification of clinical specialists
- 8 specialty areas
  - Cardiovascular/Pulmonary
  - Clinical electrophysiology
  - Geriatrics
  - Neurology
  - Orthopaedics
  - Pediatrics
  - Sports
  - Womens Health





Board  
Certification

2,000/year

XX #  
residencies

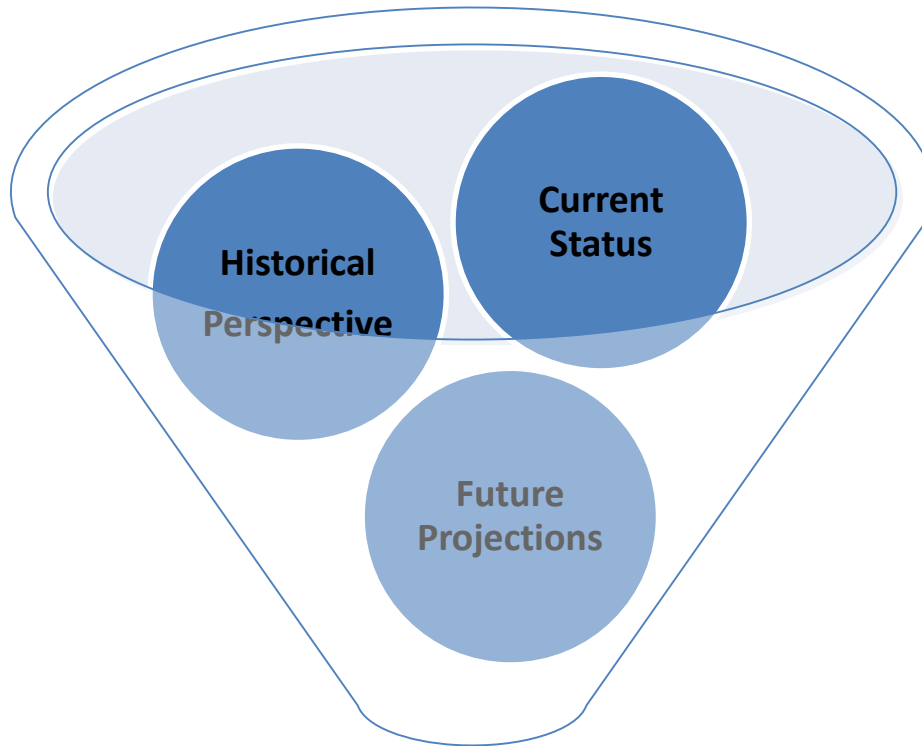


Post-  
professional  
pathway

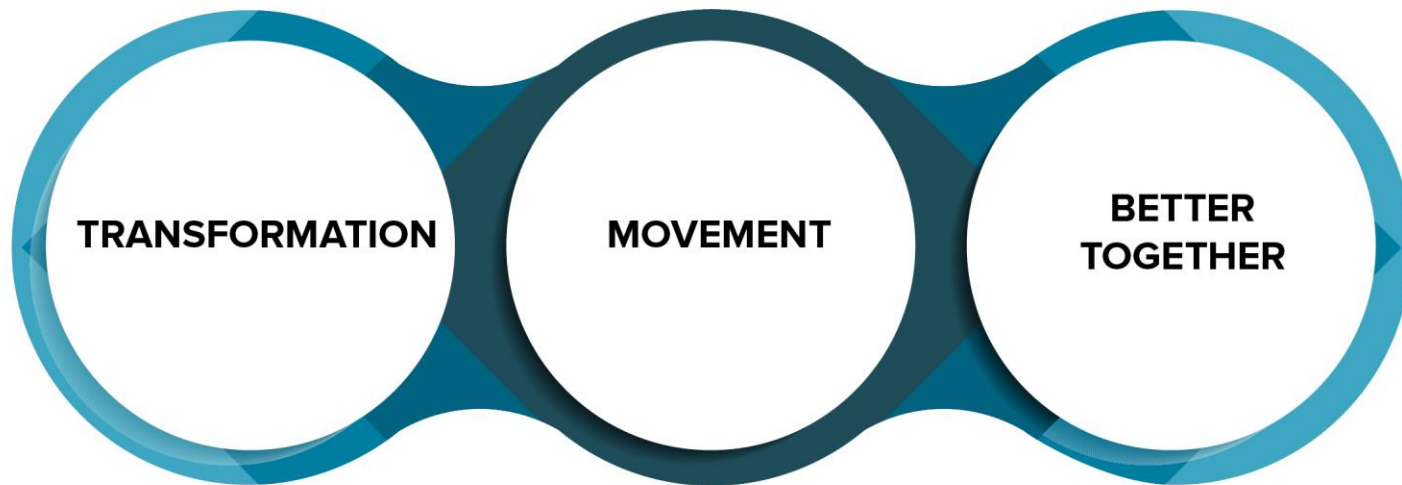
10,000/year

XX #  
residencies





**Lessons Learned**



[billboissonnault@apta.org](mailto:billboissonnault@apta.org)